

A New Species of the Caddisfly Limnophilidae from Japan (Insect: Trichoptera)

Mineo KOBAYASHI

エグリトビケラ科の新種について

昆虫綱毛翅目エグリトビケラ科エグリトビケラ属に属する新種を得ることができたので、国際命名規約にしたがって記載報告する。

現在までにわが国に生そくすることが確認されているエグリトビケラ属には10種ある。したがってここに報告する新種 *Limnophilus ukibaensis* はわが国では11番目の種ということになる (小林峯生)。

The tenth species of the genus *Limnophilus* have been hitherto reported from Japan. The eleventh of this genus was collected by Mr. N. Gyotoku from Yoshimachi, Ukibagun, Kyushu, Japan in 1956. The feature characteristic of this species were compared carefully with those of *L. correptus* and others, it was concluded that this should be regarded as a distinct species, therefore this is described in the following lines with figures.

Limnophilus ukibaensis sp. nov.

Head pale brown, with several bristles and short hairs; bristles long, brown; posterolateral warts brown, clothed with long blackish brown bristles. Ocelli present, pale brown; the face with several long brown bristles. Antennae pale brown, thick, slightly shorter than the length of the anterior wing; basal joint thick, long, as long as the length of head, clothed with long brown bristles and short pale yellow hairs, the remaining joints clothed with short pale brown hairs; each joints with brown rings.

Maxillary palpi pale brown, three-jointed, clothed with short pale yellow hairs; the first joint thick, short, pale yellow beneath, with several short bristles; the second joint long, thin; the third joint slender, apical part thick, rounded at its apex, as long as the second joint.

Labial palpi three-jointed, slender, hairy, about $\frac{1}{2}$ of the length of maxillary palpi.

Pronotum pale brown, clothed with several long bristles and short hairs; bristles

blackish brown, short hairs pale yellow; mesonotum blackish brown; mesoscuttllum and mesoscutum with blackish brown bristles; tegula nearly egg-shaped, clothed with long bristles; bristles blackish brown.

Legs brown, clothed with short pale brown hairs; spurs 1-3-4; tibia and tarsus of each legs with numerous black bristles, especially tarsus of middle and posterior legs with numerous bristles. The spure of anterior leg blackish brown, long; spure of middle leg blackish brown, preapical tibial spure as long as the outer one of apical spure slightly shoter than outer apical spure. The spure of posterior leg blackish brown, long, preapical tibial spurs as long as the preapical tibial spure of middle leg, outer one of apical spure slightly shorter than inner one.

Anterior wings rather narrow, with apical margin truncate, membrane translucent, apical and posterior region dull testaceous, posterior region with translucent spots which are nearly diamond-shaped, apical region with numerous small trnslucnet spots; veins pale yellow; venation resembled in *L. correptus*.

The posterior wing broad, hyaline, the apex pale testaceous, apical parts of R dull testaceous, other veins pale yellow; venation resembled in *L. correptus*.

Male genitalia: This structure of male genitalia resembled in *L. correptus*. The eighth tergite rounded at its apex. The ninth tergiet projected in dorsal view, nearly triangle-shaped, broaded in lateral view, apical margin slowly excised at meddle part, ventral part clothed with long bristles. Superior appendage long, broaded in dorsal view, under margin incurved, and with two black processes, dentform, above and benath with numerous brown hairs, thick and long in lateral view, apical margin truncate.

Inferior appendage long in lateral view, basal part thick; apical part slender, rounded at its apex, clothed with numerous brown hairs.

Upper penis cover blackish brown, long in dorsal view, stake-shaped, apical parts with long brown hairs. Lower penis cover thick in lateral view, as long as the inferior appendage, clothed with long golden hairs. The penis blackish brown, oar-shaped in ventral view.

Female is resemble male in color spots of both wing, but female can be distinguished from the male by structure of genitalia and number of joints maxillary palpus. Genitalia of female brown, very resembled in *L. correptus* in the structure. Upper parts of eighth tergits clothed with short golden hairs; the ninth tergite broaded in the dorsal view, apical margin dented at middle part, clothed with thick golden hairs, divided into two lobe in dorsal view, about $\frac{1}{2}$ length of upper part. The upper part slender, basal part dilated at its apex, clothed with long brown hairs.

Measurement: Holotype, body 15mm, anterior wing 19mm, posterior wing 16mm in length.

Holotype: Male (M. 1320), Yoshiimachi, Ukibagun, Fukuoka Prefecture., 29, X. 1956; pinned; collected by N. Gytoku.

Allotype: female (M. 1314). Yoshiimachi, Ukibagun, Fukuoka Prefecture., 29, X. 1956; pinned; collected by N. Gytoku.

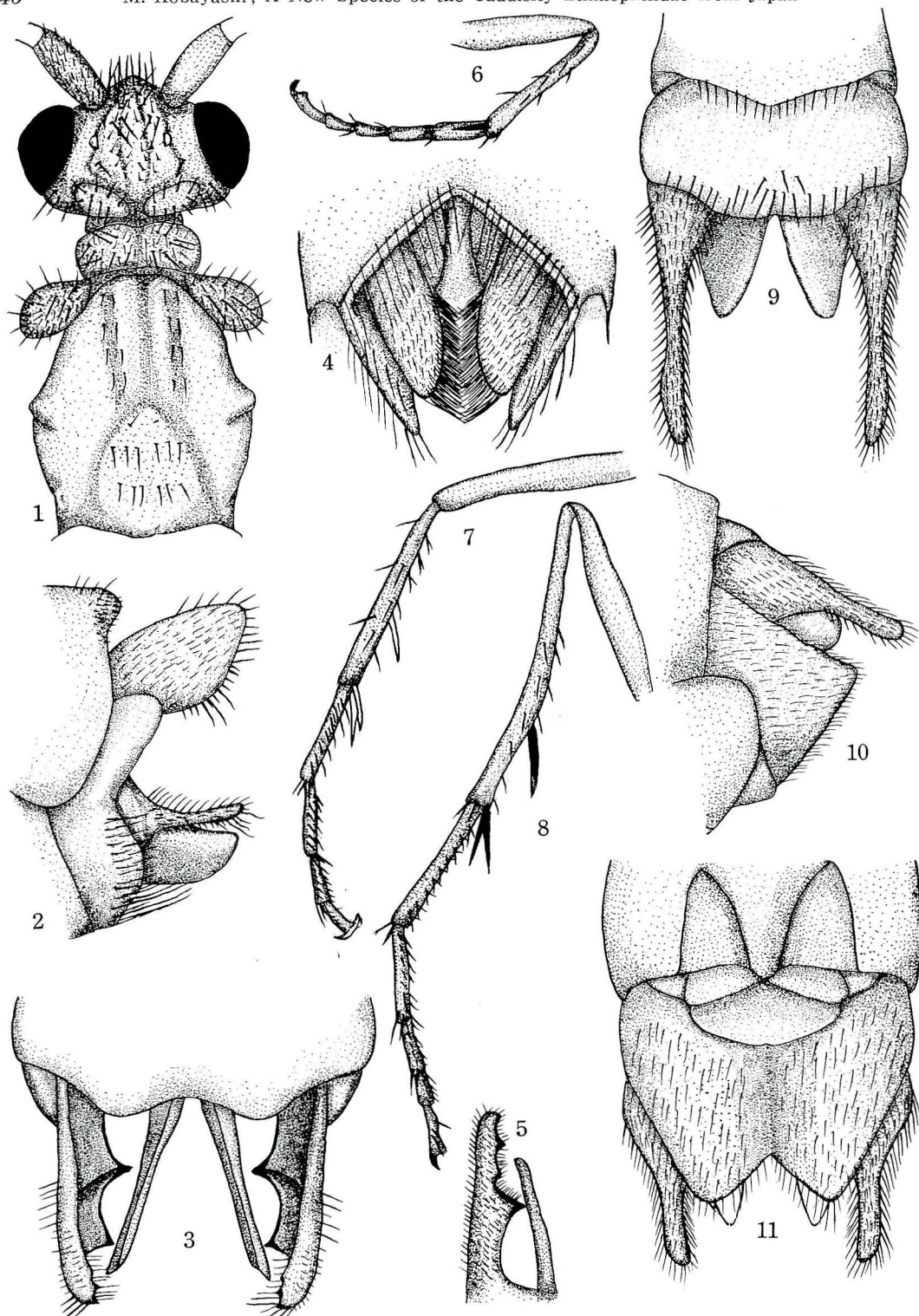
Paratype: Yoshiimachi, Ukibagun, Fukuoka Prefecture., 5 ♂ (M. 1307, 1308, 1318, 1319, 1321), 29, X. 1956; pinned; collected by N. Gytoku.

This new species resembles *L. corruptus* in size and in venation of the both wings, but differs in color of anterior and posterior wings, structure of male and female genitalia.

All of the specimens mentioned above are deposited in the Kanagawa Prefectural Museum, Yokohama, Japan.

References

- SCHMID, F. 1953. Contribution à l'étude des Limnophillidae (Trichoptera). Mitt. Schwei, Entom. Ges., 28: 1-245.
- TSUDA, M. 1942. Japanische Trichopteren I. Systematik. Mem. Coll. Sci. Kyoto Univ. Ser. B. 17 (1): 239-339.



Figs. 1-11. Head, legs and genitalia of *Limnophilus fukuokaensis* sp. nov. 1-8. Holotype, male: 1, head, dorsal view; 2, genitalia, lateral view; 3, genitalia, dorsal view; 4, genitalia, ventral view; 5, superior appendage, ventral view; 6, anterior leg; 7, middle leg; 8, posterior leg. 9-11. Allotype, female: 9, genitalia, dorsal view; 10, genitalia, lateral view; 11, genitalia, ventral view.