

## On Two New Species of Hydroptilidae from Japan. (Insecta : Trichoptera)

Mineo KOBAYASHI

### 日本産ヒメトビケラ科の2新種について

わが国に棲息するヒメトビケラ科 *Hydroptilidae* に属する種類には、ウスグロヒメトビケラ *Hydroptila usuguronis* MATSUMURA および *Oxyethira angustella* MARTYNOV (和名なし) の2種が記録されている。筆者は今回、神奈川県下および長野県下で採集したヒメトビケラ科に属する2種を分類学的に研究する機会に恵まれた。研究の結果、2種とも新種であることが明らかになったので、*Hydroptila matsuii* sp. nov., *Hydroptila ogurani* sp. nov. として発表する (小林峯生)。

One species of the genus *Hydroptila* have been hitherto reported from Japan, of this species *H. usuguroenis* MATSUMURA (1931) were described by from Hokkaido. The second and third species of the genus was collected by Mr. Masafumi MASTUI and myself. The features characteristic of these species were compared carefully with that *H. usuguronis*, and it was concluded that this should be regarded as a distinct species, therefore this is described in the following lines with figures. The specimens here described were kindly presented to me by Mr. M. MASTUI, to whom my cordial thanks are due.

### *Hydroptila matsuii* sp. nov. (Plate 25)

Head fuscous, with a pair of scent-organ caps. The caps are peculiar in form, resembling those of *usuguronis*. The erectile, and each margin produced in a minute, blunt hook at point where they meet in a recumbent position. Antenna fulvous, thick, shorter than length of anterior wing, thirty-jointed; basal joint thicker and longer than other joints. Ocelli absent.

Maxillary palpi pale fuscous, very long, five-jointed, clothed with short fuscous pubescence; the first two joints shorter and thicker than remaining joints; the fourth joint slightly shorter than the third one.

Labial palpi pale fuscous, thick, three-jointed, clothed with short fuscous pubescence; the first joint as long as length of the second one; the third joint longer than the second one.

Legs pale fuscous; spur 0, 2, 4. Spurs fuscous, stout, inner spurs of apical tibial and preapical tibial spurs shorter than outer spurs.

Anterior wing pale fuscous, lanceolate, subacute, the apex not greatly produced. Nuration as figured. Veins thick; apical forks nos. 1, 2 and 3 present. Discoidal, median and thyridial cell absent.

Posterior wing pale fuscous, lanceolate, subacute, the apex not greatly produced. Nuration as figured. Veins thick; apical fork no. 2 present. Discoidal, median and thyridial cell absent. Fringes more than twice the greatest width of that wing.

Dorsum of thorax fuscous. Pronotum with a pair of warts, with fuscous setae. Mesoscutum clothed with fuscous setae, without wart. Mesoscutellum with a pair of warts; warts slender, with fuscous setae.

Tergite and sternite fuscous, clothed with long pubescence; margin of tergites fulvous, chitinated. Pleurite pale fuscous, membranous, with a few fulvous pubescence. The ventral plate long, triangle, acuted at its apex.

Tergite of the ninth segment fulvous, triangle, chitinated. Dorsal plate divided into two parts; basal part chitinated; apical parts membranous; dorsal margin chitinated, sickle-shaped in the dorsal view. Inferior appendages fulvous, longer, halbert-shaped in lateral view. Penis long, stout, with excised apical margin. Apical margin of the dorsal plate with long two setae.

Measurement: Holotype, body 2.20 mm, anterior wing 2.80 mm, posterior wing 1.90 mm.

Holotype: Male (M. 2539) in alcohol; Riv. Chikuma, Ueda City, Nagano Prefecture; July 28, 1971: collected by M. MASTUI.

This new species resembles very much to *H. usuguronis* in size, and in the venation of the both wing, but it can be distinguished by structure of male genitalia.

The specific name *matsuii* given to this species was taken from the name of collector.

*Hydroptila oguranis* sp. nov. (Plate 26)

Dorsum of head blackish brown, clothed with long fuscous bristles, with a pair of large scent-organ caps. The caps divided into two parts; anterior part triangle, clothed with long pubescence; posterior part rounded, longer than anterior one, clothed with long bristles. The caps are peculiar in form, resembling those of *matsuii*. They are erect, and each margin is produced in a minute, blunt hook at the point where they meet in a recumbent. The frontal parts with a pair of specialized scent-hairs. Ocelli absent.

Antennae fuscous thirty-four-jointed, thick, slightly shorter than the length of anterior wing. The basal joint thicker than remaining joints.

Maxillary palpi pale fuscous, long, clothed with short blackish brown pubescence;

the first two joints shorter than remaining joints; the third joint long, about three times of length of the second joint; fourth joint as long as the third joint; the terminal joint longer than the fourth one, rounded at its apex.

Labial palpi pale fuscous, three-jointed, clothed with blackish brown pubescence; the first joint as long as the second one; the terminal joint slightly longer than the fourth one, rounded at its apex.

Legs thick, long, clothed with blackish brown pubescence; spur 0, 2, 4. Spurs thick, long, clothed with blackish brown pubescence; inner spurs of apical tibial and preapical tibial spurs shorter than outer spurs.

Anterior wing pale fuscous, lanceolate, subacute, clothed with long blackish brown pubescence. Neuration as figured, resembling those of *H. matsuii*. Veins thick, apical forks nos. 1, 2 and 3 present. Discoidal, median and thyridial cell absent.

Posterior wing pale fuscous, lanceolate, subacute, as long as length of the anterior wing, the apex not produced. Veins thick, apical for no. 2 present. Fringes more than twice the greatest width of that wing.

Dorsum of thorax blackish brown. Pronotum with a pair of warts; warts with blackish brown setae. Mesoscutum clothed with blackish setae, without wart. Mesoscutum with a pair of warts; warts slender, resembling those of *H. matsuii*.

Tergite blackish brown, clothed with long blackish brown pubescence. Pleurite pale fuscous, membranous, with a few blackish brown pubescence. The apical parts of the seventh tergite and sternite with especially long hairs. The ninth segment divided into two parts; each part triangle in the dorsal view; apical part sickle-shaped in the lateral view. The basal part of inferior appendage stout, acuted at its apex in the lateral view. Penis narrow, much longer, rounded at the base; apical part acuted at its apex, sickle-shaped.

Measurement: Holotype. body 1.75 mm, anterior wing 2.15 mm, posterior wing 2.15 mm.

Holotype: Male (M. 4649) in alcohol; Mt. Ogura, Shiroyama-Machi, Tsukuigun, Kanagawa Prefecture; September 2, 1973; collected by M. KOBAYASHI.

Allotype: Four Female (M. 4649 a, 4649 b, 4649 c, 4649 d) in alcohol; Mt. Ogura, Shiroyama-Machi, Tsukuigun, Kanagawa Prefecture; September 2, 1973; collected by M. KOBAYASHI.

This new species resembles very much to *H. usuguronis* and *H. matsuii* in the venation of the both wing, but it can be distinguished by the colour of body, in size of the both wing, and the structure of male genitalia.

The specific name *oguranis* came from the collected site.

## References

- BOTOSANEAS, L. 1970. Trichoptérous de ls République Démocratique, Chana Fieldiana-Zoology (Chicago Nat. Hist. Mus), 31: 98-107.
- KOBAYASHI, M. 1971. Studies on the Fauna and classification of Aqaitic Insect (Trichoptera) in Kanagawa Prefecture. Res. Rep Kanagawa Pref., Mus (N. H.) 3: 1-49, 24pls.
- MARTYNOV, A. B. 1933. On the interesting collection of Trichoptera from Japan. Annot. Zool. Japon. 14: 134-156.
- TSUDA, M. 1942. Zur Kenntnis der koreanischen Trichoperen. Mem. Coll. Sci., Kyoto Imp. Univ., Ser. B., 17: 227-237.
- ..... 1962. Japanische Tricopteren. I. Systematik. Mem. Coll. Sci. Kyoto Imp. Univ., Ser., B., 17: p. 239-339.

## Explanation of Plate 25

*Hydroptila matsuii* sp. nov.

A. Wings.

B-C. Head.

B. dorsal view.

C. lateral view.

D. Mesoscutellum, dorsal view.

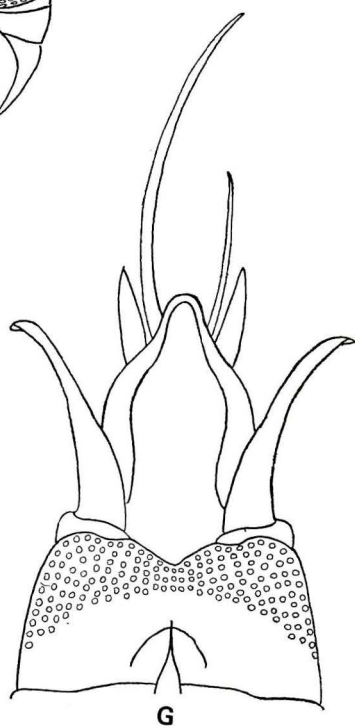
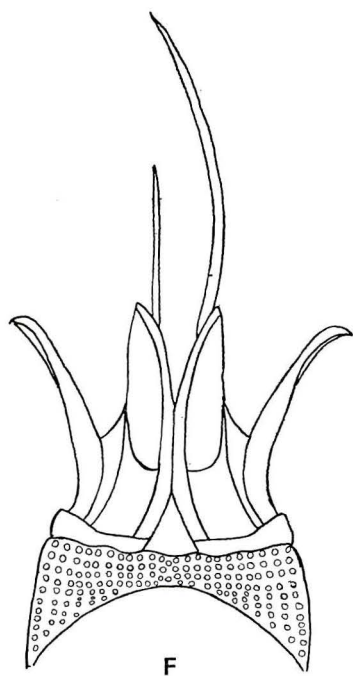
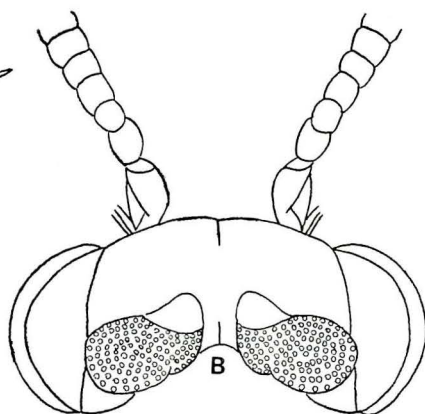
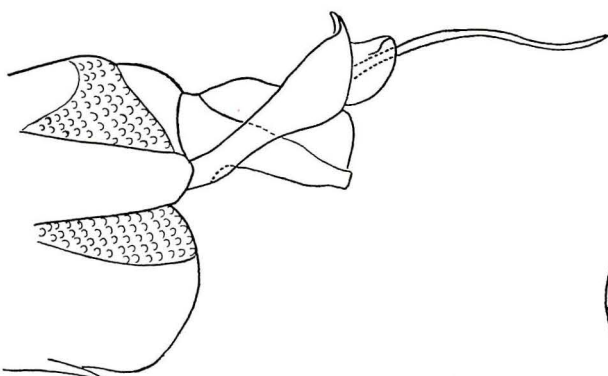
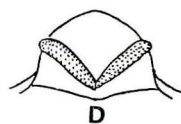
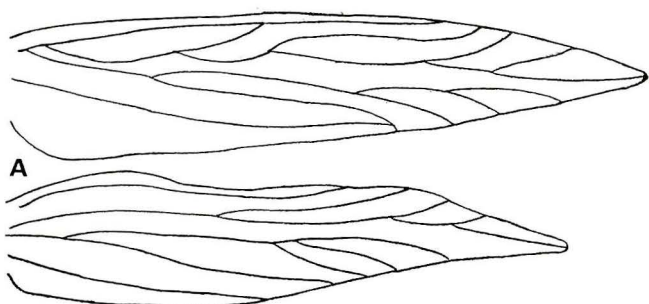
E-G. Male genitalia.

E. lateral view.

F. dorsal view.

G. ventral view.





**Explanation of Plate 26**

*Hydroptila oguranis* sp. nov.

A. Wings.

B-C. Head.

B. dorsal view.

C. lateral view.

D-F. Male genitalia.

D. lateral view.

E. dorsal view.

F. ventral view.

