

A Synonym in the Mordellid Genus *Glipa* (Insecta, Coleoptera) from the Ryukyus

Masatoshi TAKAKUWA

(Kanagawa Prefectural Museum)

琉球産オビハナノミ属の1同種異名

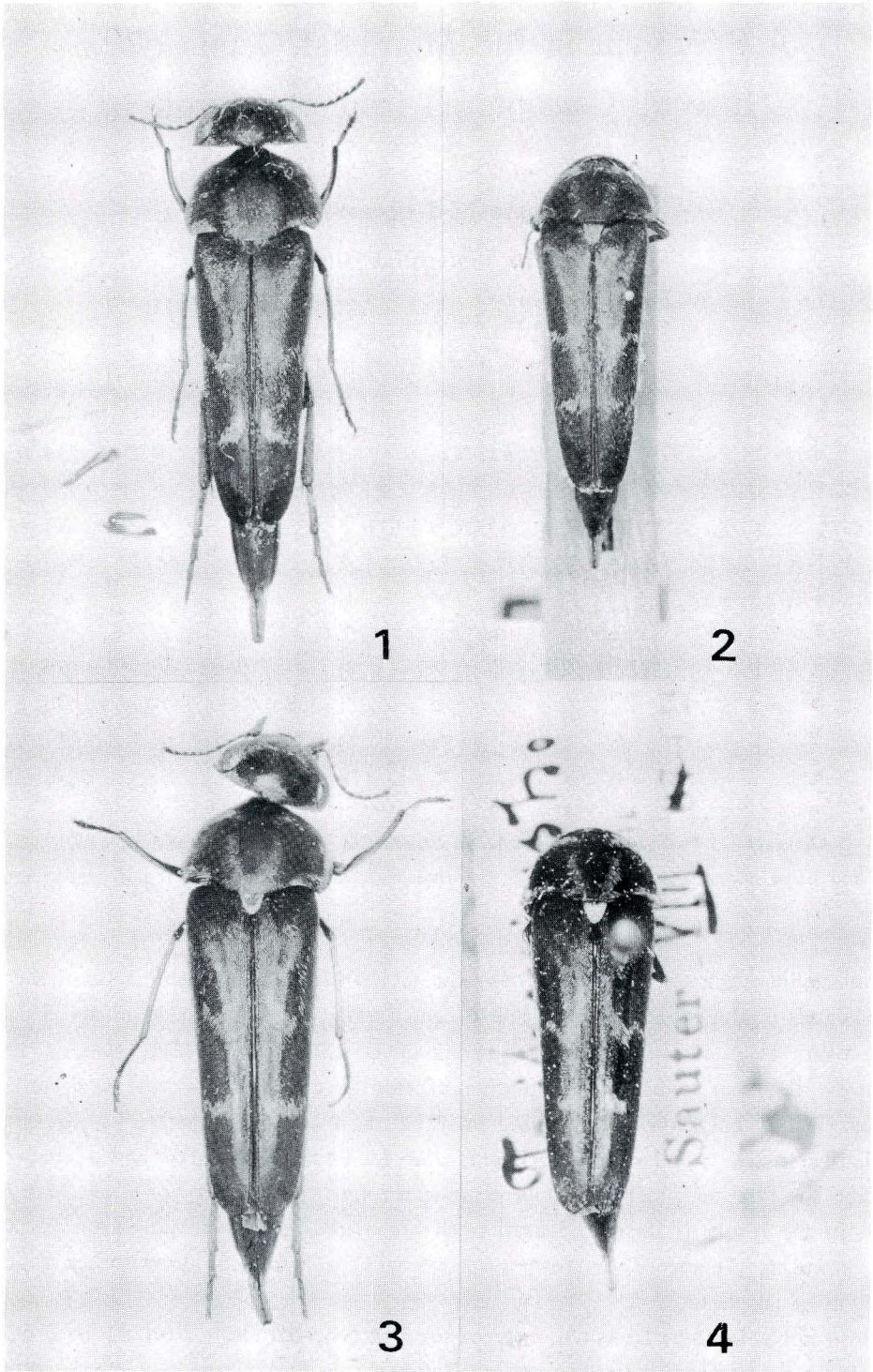
トカラオビハナノミ *Glipa masatakai* CHUJO はトカラ列島中之島で1960年に得られた1♂を基に記載されたものだが、今回その基準標本を見る機会に恵まれたので、交尾器を含む形態を検討したところ、台湾から屋久島にかけて分布するザウテルオビハナノミ *G. sauteri* PIC と同一種であることが明らかとなった。それゆえにここでは、前種を後種のシノニムとして認め、分類学的な整理を行った。

なお、ザウテルオビハナノミ50頭の標本を基に地域的な変異を検討したところ、中之島産と屋久島産は上翅後方の灰白紋が斜向する傾向が著しく、また中之島産は一般に体が小形で上翅は後方に急に狭まること、中之島など北の産地のは上翅前半部の左右の紋が互いに近づく傾向の強いことなどがわかった。しかし、いずれの特徴も地域的に固有なものとは限らず、したがって亜種として区別する必要を認めなかった。(高桑正敏)

Abstract The type specimens of two mordellid beetles, *Glipa masatakai* CHÛJÔ and *Glipa sauteri* PIC, are figured. The former species is treated as a junior synonym of the latter.

A mordellid species, *Glipa masatakai* CHÛJÔ, 1960, from Nakanoshima Is. of the Tokara Islands of the Ryukyus has hitherto been treated as an independent species (NOMURA, 1966; TAKAKUWA, 1985) or a subspecies of *G. sauteri* PIC, 1911 (NOMURA, 1963). However, the true taxonomical situation of this species has not yet been clarified, because it has not only been rediscovered but also an allied species, *G. sauteri*, is distributed in the type locality of *G. masatakai*. Recently, I have had a chance to examine the type specimen of *G. masatakai* through the courtesy of Prof. Masataka SATÔ. In the result, it became clear that *G. masatakai* is a mere pubescent variation of *G. sauteri*. Therefore, the former species will be arranged herewith as a junior synonym of the latter.

Before going further, I wish to express my hearty gratitude to Prof. M. SATÔ of Nagoya Women's University for his constant guidance and encouragement on the present study, and to Dr. J. J. MENIER and his neighbors, Museum National d'Histoire, Naturelle, Paris, for their kindness in permission to examine PIC's Collection of Mordellidae. Deep



Figs. 1-4. *Glipta sauteri* PIC. —1. *G. sauteri*, ♂, from Nakanoshima Is.; 2. *G. masatakai* (= *G. sauteri*), type, ♀; 3. *G. sauteri*, ♂, from Taiwan; 4. *G. sauteri*, type, ♀.

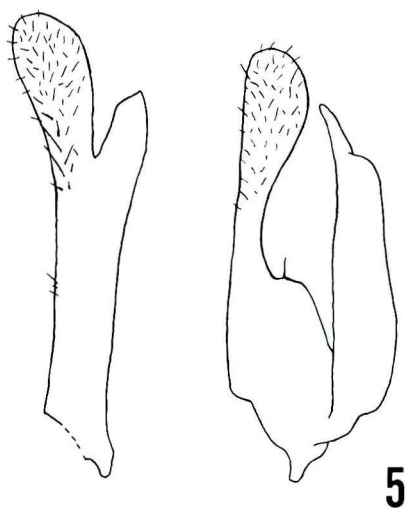


Fig. 5. Male genitalia of *Glipa masatakai* (= *G. sauteri*), type. (Scale: 0.5mm.)

thanks are also due to many Japanese entomologists supplying with materials.

Glipa sauteri PIC

Glipa sauteri PIC, 1911, Deutsch. Ent. Nat.-Bibl., 2 : 190. — KONO, 1928, Trans. Sapporo nat. Hist., 10 : 31; 1936, Fauna Nipponica, 10 (8-1) : 15, 18, fig. 10. — NOMURA, 1963, Icon. ins. japon. Col. nat. ed., 2:247, pl. 124, fig. 9; 1966, Ent. Rev. Japan, 18:47. — TAKAKUWA, 1976, Elytra, Tokyo, 3:15; 1985, Coleoptera of Japan in Color, 3:379, pl. 65, fig. 25.

Glipa (Macroglipa) sauteri sauteri: NOMURA, 1967, Ent. Rev. Japan, 19:8.

Glipa masatakai CHÛJÔ, 1960, Nipponius, Takamatsu, 1 (8):1, fig. — NOMURA, 1966, Ent. Rev. Japan, 18:47. — TAKAKUWA, 1985, Coleoptera of Japan in Color, 3:379. (**Syn. nov.**)

Glipa sauteri masatakai: NOMURA, 1963, Icon. ins. japon. Col. nat. ed., 2:247.

Specimens examined in my collection. Taiwan: 3♀♀, Kenting Park, 3. V. 1971, K. SAKAI leg.; 1♀, Sulo near Palin, 19. VII. 1978, T. SHIMOMURA leg.; 5♂♂ 4♀♀, Sankuang, 17-28. VII. 1978, same, Ishigaki Is.: 1♀, Yonehara, 4. VI. 1973, K. AKIYAMA leg.; 1♂, same, 16. VI. 1973, J. KOMIYA leg.; 3♂♂, same, 19. VI. 1973, K. AKIYAMA leg., Amami-Oshima Is.: 1♀, Ohgachi, 26. VI. 1968, K. SAKAI leg.; 1♂, Hatsuno, 24. VI. 1971, H. TAKESHITA leg.; 1♀, same, 28-31. VI. 1972, M. KUBOKI leg.; 10♂♂ 1♀, Chuo-rindo, 25. VI. 1979, T. KAMAKARI leg., Nakanoshima Is.: 10♂♂, 12-15. VII. 1974, T. SEINO leg.; 1♂, 20. VII. 1975, T. KOSAKA leg.; 1♀, 18. VII. 1986, N. KOBAYASHI leg.; 1♀, 23, VII. 1986, H. FUJITA leg., Yakushima Is.: 3♂♂ 1♀, Miyanoura, 20-22. VII. 1968, M. TAKAKUWA leg.; 1♀, Ohkawa, 24-26. VII. 1976, S. INOKAWA leg.

Distribution. Taiwan, Ishigaki Is., Amami-Oshima Is., Nakanoshima Is. of the Tokara Iss., Yakushima Is.

Variation. The type specimen of *Glipe masataakai* from Nakanoshima Is. is apparently distinguished from specimens in Taiwan (type locality of *G. sauteri*) by the following points: 1) body in male smaller, rapidly and almost straightly attenuate apicad; 2) elytral posterior whitish fascia not only strongly inclined, 3) but also barely connected with basal maculation along suture though very thinly; 4) basal maculation of elytron more closed to each other. Of these, 3rd point seems to be somewhat characteristic to the type specimen though in some specimens from Nakanoshima and Amami-Oshima the fascia fairly extends anteriorly along suture, and the others are not always peculiar only to Nakanoshima's specimens. First point distinctly appears in Nakanoshima's specimens, but is more or less recognized in specimens from Amami-Oshima and Yakushima. Second occurs in Nakanoshima's and Yakushima's usually, but also sometimes or rarely in Amami-Oshima's, Ishigaki's and Taiwan's. Forth is fully variable, rather gradually becomes more distinct towards northeastern region.

References

- CHÛJÔ, M., 1960. Description of a new mordellid-species from the Island Nakanoshima (an islet belonging to the Tokara Islands), Loochoo Archipelago—Studies on the mordellid-beetles (VIII) —. *Niponius, Takamatsu*, 1 (8): 1-3.
- KÔNO, H., 1928. Die Mordelliden Japans (Col.). *Trans. Sapporo nat. Hist. Soc.*, 10:29-46.
- 1936. Family Mordellidae. In OKADA, Y., et al. (eds.), *Fauna Nipponica*, 10 (8-1): i+1-4+1-79. Sanseido, Tokyo. (In Japanese.)
- NOMURA, S., 1963. Family Mordellidae. In NAKANE, T., et al. (eds.), *Icon. ins. japon. Col. nat. ed.*, 2: 247-255, pls. 124-128. Hokuryukan, Tokyo. (In Japanese.)
- 1966. Mordellid-fauna of the Loocho Islands, with descriptions of some new forms. *Ent. Rev. Japan*, 18: 41-53, pl. 5.
- 1967. The Mordellidae from Formosa. *Ditto*, 19: 5-34.
- PIC, M., 1911. H. Sauters Formosa-Ausbeute (Cantharidae, Lampyridae, Mordellidae, Melandryidae, Oedemeridae). *Deutsch. Ent. Nat.-Bibl.*, 2: 188-189.
- TAKAKUWA, M., 1976. List of the tribe Mordellini from the Yaeyama Islands (Japan). *Elytra, Tokyo*, 3: 15-18. (In Japanese with English summary.)
- 1985. Tribe Mordellini. In KUROSAWA, Y., et al. (eds.), *Coleoptera of Japan in Color*, 3: 376-388. Hoikusha, Osaka. (In Japanese.)